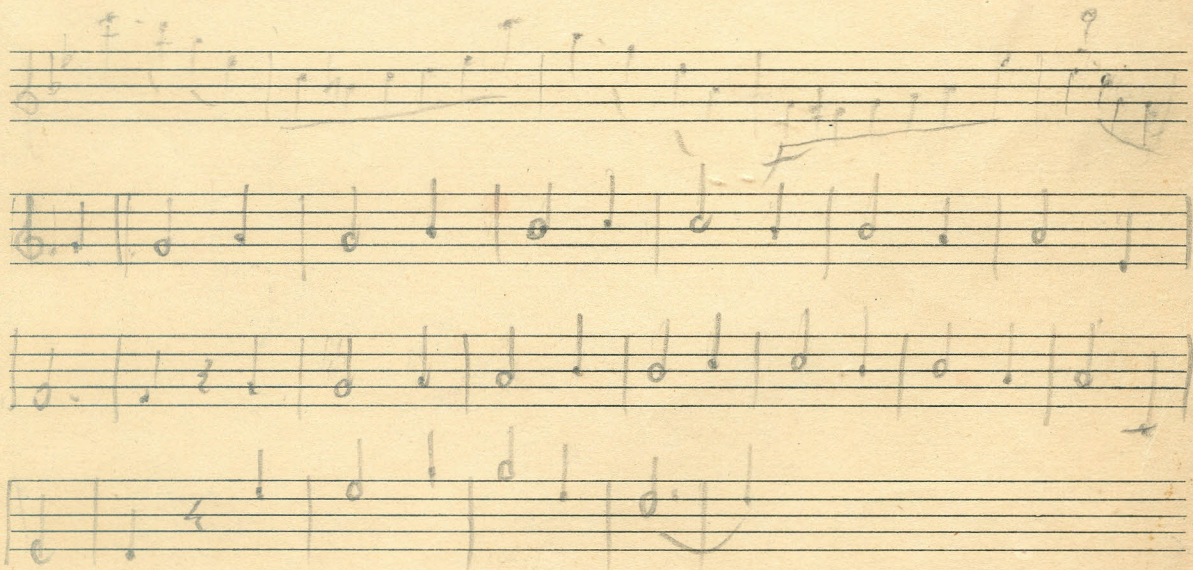




"Doña Bety"

Pasillo

Quinta de Juan Esteban



This image displays a page of handwritten musical notation, likely a piano score, consisting of eight systems of staves. Each system typically contains two staves: a treble clef staff on top and a bass clef staff on the bottom. The notation is dense and includes various musical symbols such as notes, rests, accidentals (sharps, flats, naturals), and dynamic markings. The paper shows signs of age, with some staining and fading, particularly in the lower right quadrant. The handwriting is in dark ink, and the overall style suggests a personal or working manuscript.

*Andante*

Handwritten musical notation for the first system, featuring a treble and bass clef with various notes and rests.

Handwritten musical notation for the second system, including a treble clef and a bass clef with complex rhythmic patterns.

Handwritten musical notation for the third system, showing a treble clef and a bass clef with various note values and rests.

Handwritten musical notation for the fourth system, featuring a treble clef and a bass clef with dense chordal textures.

Handwritten musical notation for the fifth system, including a treble clef and a bass clef with various note values and rests.

*Fin*

Handwritten musical notation for the sixth system, consisting of a few notes and rests, ending with a double bar line.